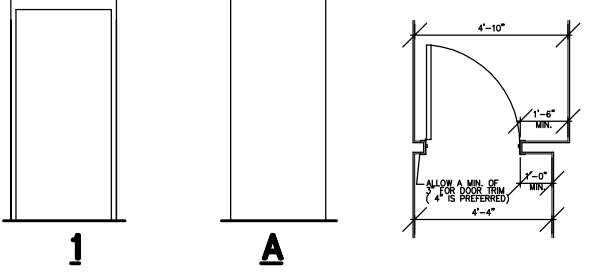
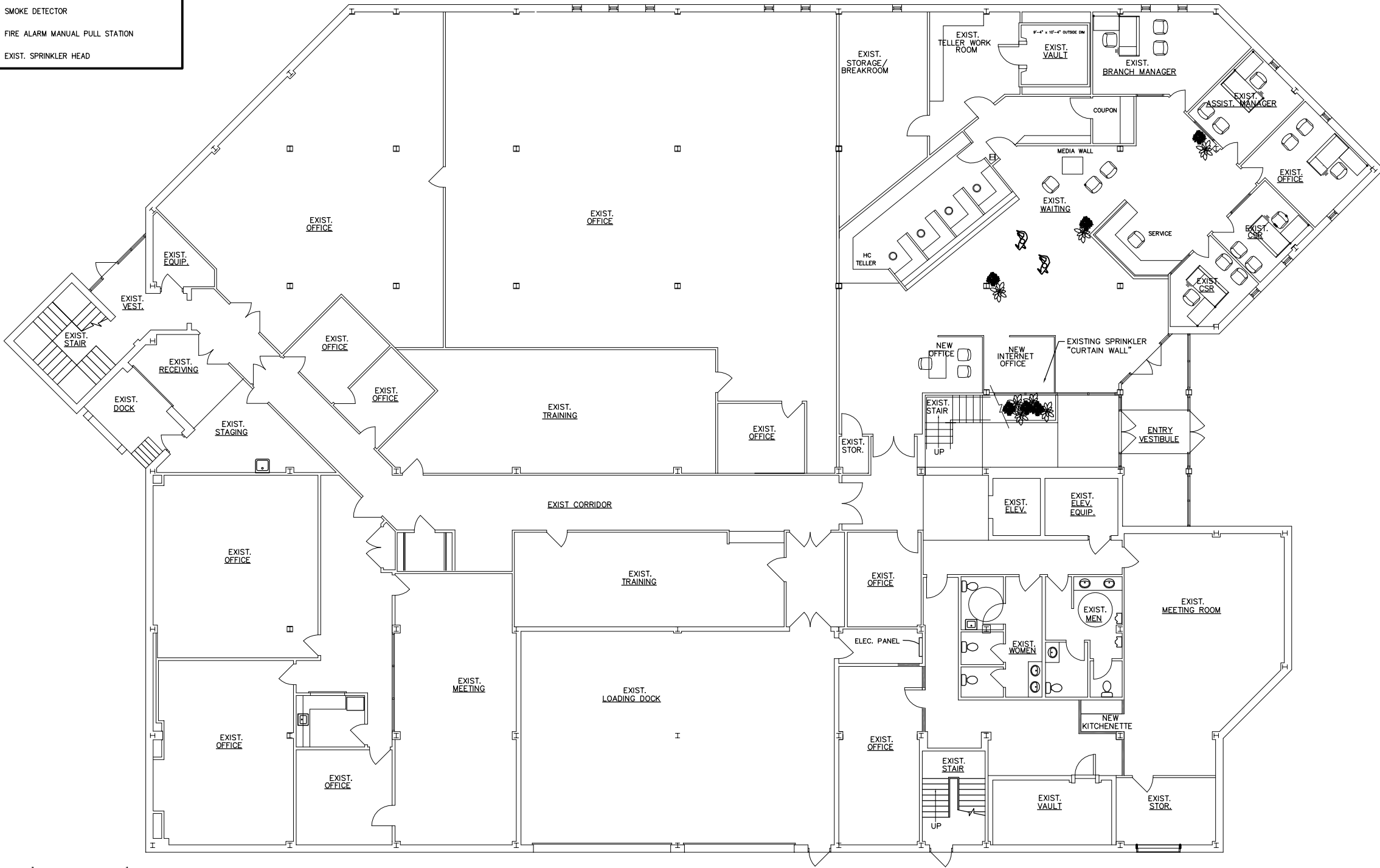


**LEGEND:**

- NEW FIRE EXTINGUISHER, MINIMUM 2A RATING
- EMERGENCY LIGHTING, BATTERY PACK w/HEADS
- EMERGENCY LIGHTING, REMOTE HEAD
- EXIT SIGN
- NEW WALL CONSTRUCTION
- SMOKE DETECTOR
- FIRE ALARM MANUAL PULL STATION
- EXIST. SPRINKLER HEAD



**AS BUILT FIRST FLOOR PLAN**  
SCALE: 1/8" = 1'-0"

PREVIOUS L & I APPROVAL  
FILE NO. 102526  
INDEX NO. 85-8494

**DISCLAIMER**  
This drawing was prepared to obtain Pennsylvania Department of Labor and Industry or Department of Health approval only, and is not intended to be used as documentation for construction, bidding or estimating. The Architect assumes no liability for use of this drawing beyond its intended purpose.

Plans, maps, specifications, studies, and reports not containing a red ink seal imprint accompanied by an original signature by the licensed professional may have been fraudulently altered and shall not be considered an original copy. All information should be disregarded unless verified by the professional whose signature appears above.  
Copyright Protected 2005.  
Larson Design Group, Inc.

DRAWN BY : LCG  
CHECKED BY :  
DATE : 01/28/04  
SCALE : AS SHOWN  
REVISIONS :

ARCHITECTS • ENGINEERS • SURVEYORS  
**LARSON DESIGN GROUP**  
and its affiliate Larson Architectural Group

1000 COMMERCE PARK DRIVE  
P.O. BOX 487  
WILLIAMSPORT, PA 17703-0487  
PHONE (570) 323-6603  
FAX (570) 323-9902  
www.larsondesigngroup.com

PROPOSED FIRST FLOOR PLAN  
**BRANCH BANK RENOVATIONS**  
FOR  
**C + N BANK**  
130 COURT STREET, WILLIAMSPORT, PA 17701

SHEET NO : **A4**  
PROJECT NO : 5593-005