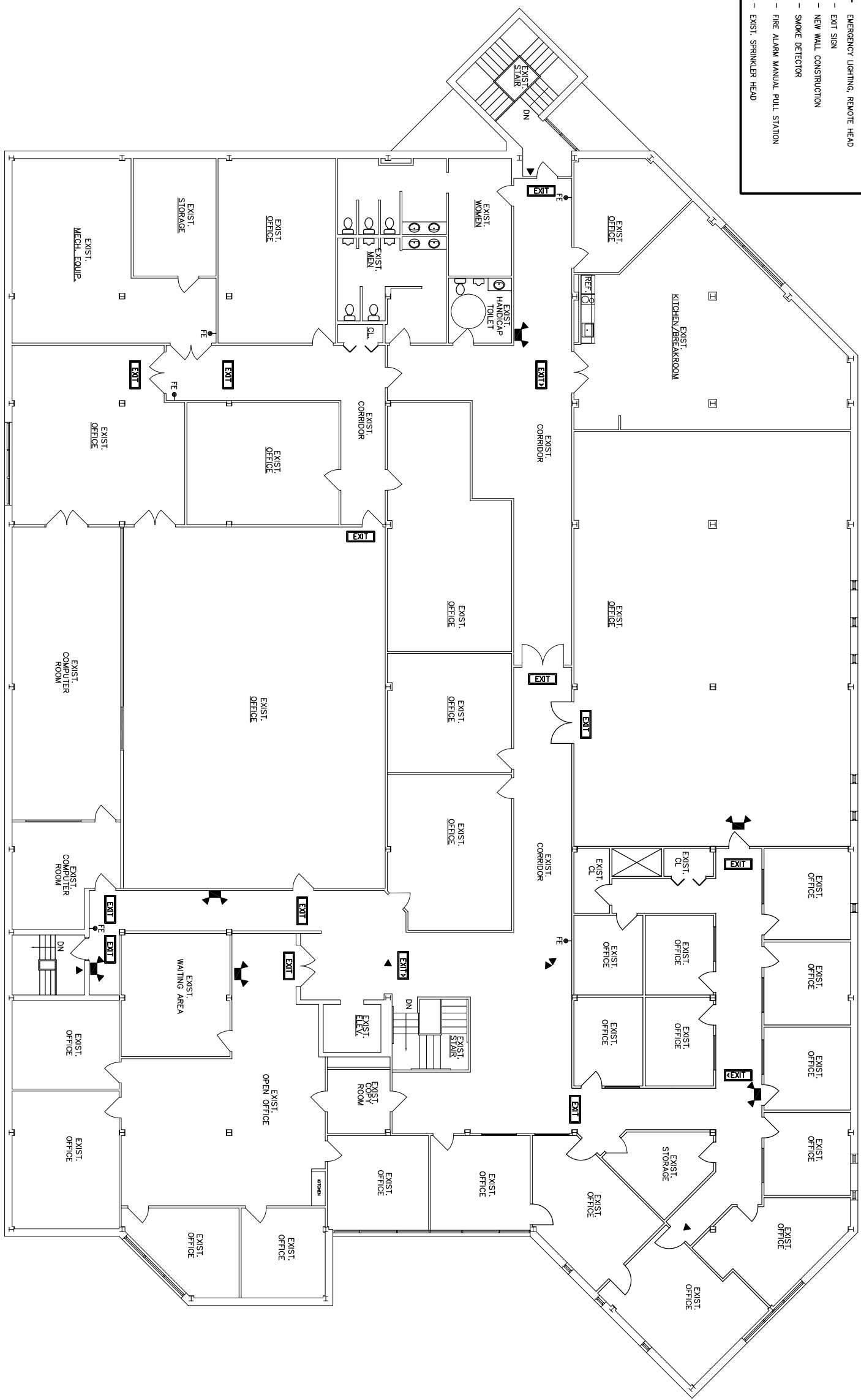
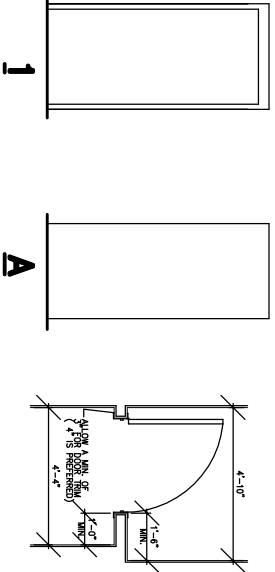


LEGEND

- FE - NEW FIRE EXTINGUISHER, MINIMUM 2A RATING
- EMERGENCY LIGHTING, BATTERY PACK W/HEADS
- EMERGENCY LIGHTING, REMOTE HEAD
- EXIT SIGN
- EXIT
- NEW WALL CONSTRUCTION
- SMOKE DETECTOR
- FIRE ALARM MANUAL PULL STATION
- EXIST. SPRINKLER HEAD



1 SECOND FLOOR PLAN
SCALE: 1/8" = 1'-0"



PREVIOUS L & I APPROVAL
FILE NO. 102526
INDEX NO. 85-844

DISCLAIMER
The drawings were prepared to obtain Pennsylvania Department of Labor and Health approval only, and are not to be used as documentation for estimating. The Architect assumes no liability for any errors or omissions in the drawings or for any other purpose.

PROPOSED SECOND FLOOR PLAN
BRANCH BANK RENOVATIONS
FOR
C + N BANK
130 COURT STREET, WILLIAMSPORT, PA 17701

LARSON ARCHITECTS • ENGINEERS • SURVEYORS
LDG
DESIGN GROUP
1000 COMMERCE PARK DRIVE
P.O. BOX 487
WILLIAMSPORT, PA 17703-0487
PHONE (570) 323-6603
FAX (570) 323-9902
and its affiliate Larson Architectural Group www.larsondesigngroup.com

| | |
|--------------|----------|
| DATE : | 01/28/04 |
| SCALE : | AS SHOWN |
| REVISIONS : | |
| CHECKED BY : | LOG |
| DRAWN BY : | LOG |

Notes, notes, specifications, studies, etc. are to be read in conjunction with the drawings. Professional seal and stamp of the architect must be on the original copy. All information should be designed and checked by the architect. The architect shall be responsible for the accuracy of the information. The architect shall be responsible for the accuracy of the information. The architect shall be responsible for the accuracy of the information.

SHEET NO :
AS
PROJECT NO :
5593-005